

# SPECIFICATION



**Airbus A320-271N**

**Pos.# 3**

**Rev.: No. 2**

**Date: 08-APR-2024**

**Confidentiality and Disclaimer:**

All rights reserved. This document is the sole property of the Seller. This document has been drafted and distributed for information purposes only. This document may not be reproduced or (re) distributed or otherwise utilized in part or whole without the express prior written permission of the Seller. While the information presented in this document is given in good faith based upon the most current information available to the Seller, changes or modifications with respect to the subject aircraft and the associated records and documentation may be made at any time. No express or implied warranty or representation is made and this document may not be regarded as establishing any obligation on the part of the Seller or any of its affiliates. It is expected that interested parties will conduct an independent physical inspection of the aircraft and associated records and documentation.

SPECIFICAT

**AIRCRAFT IDENTIFICATION**

Aircraft Model	A320-271N
Manufacture Year	2022
Engines Model	PW1127G-JM
APU Model	GTCP131-9A

**WEIGHTS, Metric US Customary**

	79'400 [Kg]	175'047 [Lbs]
Take Off Weight	79'000 [Kg]	174'165 [Lbs]
Landing Weight	67'400 [Kg]	148'591 [Lbs]
Maximum Ramp Weight (MZFW)	64'300 [Kg]	141'757 [Lbs]

WV050/05

**AIRFRAME STATUS**

(5000) Total Airframe Hours	2'621
Total Cycles	1'454
Status Date	05-MAR-2024

**MAINTENANCE STATUS**

C - Check interval	24 MO / 7'500 FH / 5'000 FC
6 Y - Check interval	72 MO
12 Y - Check interval	144 MO
Next C - Check	28-DEC-2024
Next 6 Y - Check	27-DEC-2028
Next 12 Y - Check	26-DEC-2034

SPECIFIC

LDG DETAILS	NLG	LH MLG	RH MLG
Part Number	10-375902-004	10-450301-007	10-450401-007
Hours Since New	2'608	2'608	2'608
Cycles Since New	1'450	1'450	1'450
Last Overhaul Date	NONE	NONE	NONE
Hours Since Last Overhaul	N/A	N/A	N/A
Cycles Since Last Overhaul	N/A	N/A	N/A
Remaining Cycles	18'550	18'550	18'550
Overhaul Due Date	Q4-2034	Q4-2034	Q4-2034
Overhaul Interval	20'000 FC or 12 Years	20'000 FC or 12 Years	20'000 FC or 12 Years
Status Date	05-MAR-2024	05-MAR-2024	05-MAR-2024

ENGINE / APU	Engine 1	Engine 2	APU
Manufacturer	Pratt & Whitney	Pratt & Whitney	Honeywell
Model	PW1127G-JM	PW1127G-JM	GTCP131-9A

ENGINE / APU	Engine 1	Engine 2	APU
Since New	2'626	2'626	2'626
Since New	1'457	1'457	1'457
Shop Visit Date	NONE	NONE	NONE
Shop Visit	N/A	N/A	N/A
Shop Visit	N/A	N/A	N/A
Shop Visit	N/A	N/A	N/A
LLP Limiter	7'973	7'973	28'543
Status Date	06-MAR-2024	06-MAR-2024	06-MAR-2024

### ENGINE Pos.#1 – LLP

Engine Type:		TSN:	2`626	TSLSV:	N/A	Date:
PW1127G-JM		CSN:	1`457	CSLSV:	N/A	06-MAR-2024
NO.	PART NAME	PART NUMBER	TOTAL HOURS	TOTAL CYCLES	LIFE LIMIT CYCLES	REMAINING CYCLES
1 )	HUB ASSY OF-FAN ROTOR,1STAGE	5370400-01	2`626	1`457	25`000	23`543
2 )	SHAFT ASSY OF-FDGS	5370413-01	2`626	1`457	25`000	23`543
	COMPRESSOR ROTOR-AXIAL,1STAG	5373841	2`626	1`457	25`000	23`543
4 )	COMPRESSOR ROTOR-AXIAL,2STAG	5373812	2`626	1`457	25`000	23`543
5 )	HUB-LOW PRESSURE COMPRESSOR	5373810	2`626	1`457	25`000	23`543
6 )	COMPRESSOR ROTOR-AXIAL,3STG	5373813	2`626	1`457	25`000	23`543
7 )	HUB-HPC ROTOR, FRONT	30G9801	2`626	1`457	23`400	21`943
8 )	COMPRESSOR ROTOR-A/O, STG1	32A4301	2`626	1`457	20`000	18`543
9 )	COMPRESSOR ROTOR-HPC, STG2	32A4302	2`626	1`457	12`500	11`043
10 )	COMPRESSOR ROTOR-HPC, STG3	32A4313	2`626	1`457	17`000	15`543
11 )	COMPRESSOR ROTOR-HPC, STG4	32A4314	2`626	1`457	12`500	11`043
12 )	HPC ROTOR-AXIAL, 5ST	30G6205	2`626	1`457	25`000	23`543
13 )	HPC ROTOR-AXIAL, 6ST	30G6206	2`626	1`457	18`700	17`243
14 )	HPC ROTOR-AXIAL, 7ST	30G4407	2`626	1`457	20`000	18`543
15 )	HPC ROTOR-AXIAL, 8ST	30G8908	2`626	1`457	22`400	20`943
16 )	SHAFT-HPC ROTOR	30G6140	2`626	1`457	20`600	19`143
17 )	HUB-HPC ROTOR, REAR	30G8208	2`626	1`457	25`000	23`543
18 )	TUBE-AIR, COOLING, HPC	30G2225	2`626	1`457	15`100	13`643
19 )	CASE ASSY OF-DIFFUSER, OUTER	30G4916-01	2`626	1`457	14`200	12`743
20 )	HUB-HPT, 1STAGE	30G7301	2`626	1`457	10`500	9`043
21 )	SEAL-AIR, HPT ROTOR, 1ST	30G4617	2`626	1`457	12`500	11`043
22 )	PLATE-RETAINING, BLADE, HPT	31G0018	2`626	1`457	12`500	11`043
23 )	HUB-HPT,2STAGE	30G6602	2`626	1`457	12`300	10`843
24 )	SEAL-AIR, HPT, 2STAGE	30G4811	2`626	1`457	9`430	7`973
25 )	PLATE-HPT, 2STAGE	30G4606	2`626	1`457	12`500	11`043
26 )	DISK-LP TURBINE, STG1	5387571	2`626	1`457	25`000	23`543
27 )	DISK-LP TURBINE, STG2	5387572	2`626	1`457	25`000	23`543
28 )	DISK-LP TURBINE, STG3	5387553	2`626	1`457	25`000	23`543
29 )	SHAFT-LPT	5378509	2`626	1`457	25`000	23`543
<b>LOWEST LIMITER</b>						<b>7`973</b>

**ENGINE Pos.#2 – LLP**

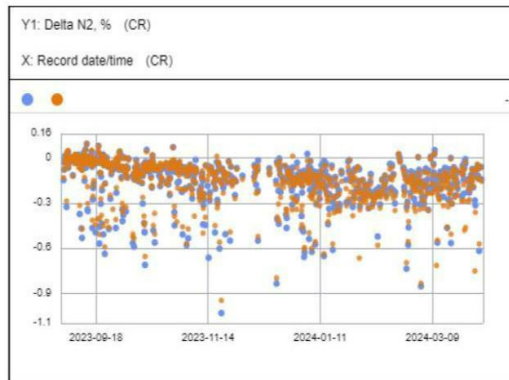
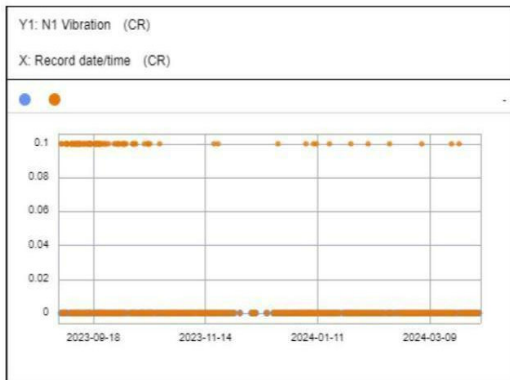
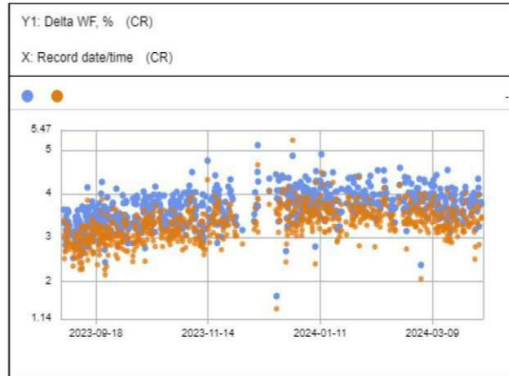
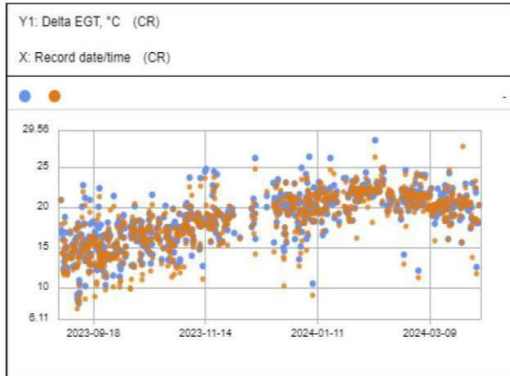
Engine Type:		TSN:	2`626	TSLSV:	N/A	Date:
PW1127G-JM		CSN:	1`457	CSLSV:	N/A	06-MAR-2024
NO.	PART NAME	PART NUMBER	TOTAL HOURS	TOTAL CYCLES	LIFE LIMIT CYCLES	REMAINING CYCLES
1 )	HUB ASSY OF-FAN ROTOR,1STAGE	5370400-01	2`626	1`457	25`000	23`543
2 )	SHAFT ASSY OF-FDGS	5370413-01	2`626	1`457	25`000	23`543
3 )	COMPRESSOR ROTOR-AXIAL,1STAG	5373841	2`626	1`457	25`000	23`543
4 )	COMPRESSOR ROTOR-AXIAL,2STAG	5373812	2`626	1`457	25`000	23`543
5 )	HUB-LOW PRESSURE COMPRESSOR	5373810	2`626	1`457	25`000	23`543
6 )	COMPRESSOR ROTOR-AXIAL,3STG	5373813	2`626	1`457	25`000	23`543
7 )	HUB-HPC ROTOR, FRONT	30G9801	2`626	1`457	23`400	21`943
8 )	COMPRESSOR ROTOR-A/O, STG1	32A4301	2`626	1`457	20`000	18`543
9 )	COMPRESSOR ROTOR-HPC, STG2	32A4302	2`626	1`457	12`500	11`043
10 )	COMPRESSOR ROTOR-HPC, STG3	32A4313	2`626	1`457	17`000	15`543
11 )	COMPRESSOR ROTOR-HPC, STG4	32A4314	2`626	1`457	12`500	11`043
12 )	HPC ROTOR-AXIAL, 5ST	30G6205	2`626	1`457	25`000	23`543
13 )	HPC ROTOR-AXIAL, 6ST	30G6206	2`626	1`457	18`700	17`243
14 )	HPC ROTOR-AXIAL, 7ST	30G4407	2`626	1`457	20`000	18`543
15 )	HPC ROTOR-AXIAL, 8ST	30G8908	2`626	1`457	22`400	20`943
16 )	SHAFT-HPC ROTOR	30G6140	2`626	1`457	20`600	19`143
17 )	HUB-HPC ROTOR, REAR	30G8208	2`626	1`457	25`000	23`543
18 )	TUBE-AIR, COOLING, HPC	30G2225	2`626	1`457	15`100	13`643
19 )	CASE ASSY OF-DIFFUSER, OUTER	30G4916-01	2`626	1`457	14`200	12`743
20 )	HUB-HPT, 1STAGE	30G7301	2`626	1`457	10`500	9`043
21 )	SEAL-AIR, HPT ROTOR, 1ST	30G4617	2`626	1`457	12`500	11`043
22 )	PLATE-RETAINING, BLADE, HPT	31G0018	2`626	1`457	12`500	11`043
23 )	HUB-HPT,2STAGE	30G6602	2`626	1`457	12`300	10`843
24 )	SEAL-AIR, HPT, 2STAGE	30G4811	2`626	1`457	9`430	7`973
25 )	PLATE-HPT, 2STAGE	30G4606	2`626	1`457	12`500	11`043
26 )	DISK-LP TURBINE, STG1	5387571	2`626	1`457	25`000	23`543
27 )	DISK-LP TURBINE, STG2	5387572	2`626	1`457	25`000	23`543
28 )	DISK-LP TURBINE, STG3	5387553	2`626	1`457	25`000	23`543
29 )	SHAFT-LPT	5378509	2`626	1`457	25`000	23`543
<b>LOWEST LIMITER</b>						<b>7`973</b>



# SPECIFICATION

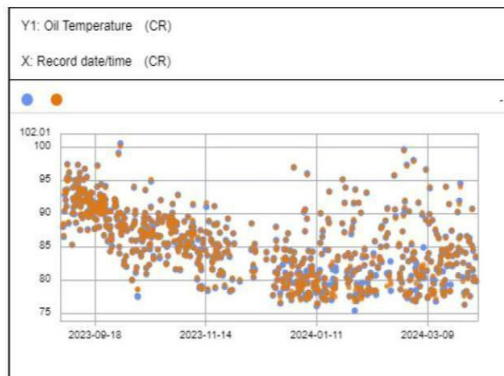
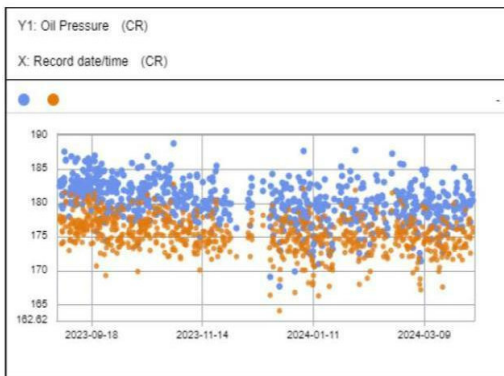
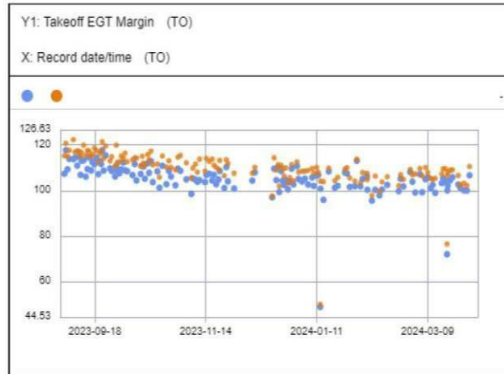
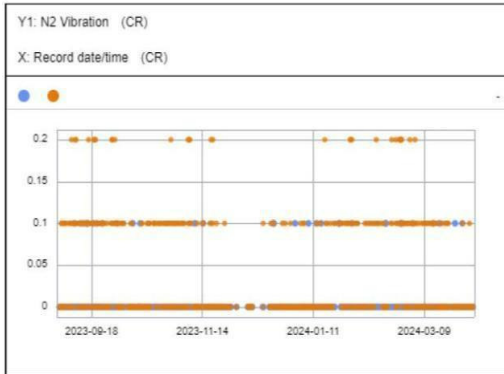
● ENGINE#1 PW1127G-JM

○ ENGINE#2 PW1127G-JM



ENGINE#1 PW1127G-JM

ENGINE#2 PW1127G-JM



SPECIFIC

CAPABILITIES AND MODIFICATION STATUS	COMPLIANCE	NOTES
	CAT III	
ETOPS Cap:	No	
Fuel Flow Fuel Qty Indication	Metric	
Sharklets/Winglets	Yes	Sharklets
Auxiliary Fuel Capacity	No	
	Yes	EASA – P by 01-JAN-2012; R – Not required FAA – P by 28-DEC-2010 / R 100% Fleet by 26-DEC-2017
Reinforced Cockpit Door	Yes	
Cockpit 4th occupant seat	Yes	
Cargo Loading System	No	
Cockpit Door Surveillance System	Yes	
GPWS –Ground Proximity Warning System	Yes	
RVSM – Reduced Vertical Separation Minima	Yes	
Traffic Collision Avoidance System [TCAS]	Yes	EASA – P on 12-MAR-2014 / R on 01-DEC-2015
Software version 7.1	Yes	FAA – Not required
Enhanced Surveillance [EHS] Mode S, ATC Transponder	Yes	
Elementary Surveillance [ELS], ATC Transponder	Yes	
ATC Mode S Transponder ADS-B Out DO 260Bcapability	Yes	EASA – P on 08-JUN-2016 & R on 07-JUN-2020 FAA – P & R on 01-JAN-2020
SELCAL – Selective-Calling Radio System	Yes	
ISIS – Integrated Standby Instrument System	Yes	
ISIS – Altitude indication in Meters	Yes	
Head-Up Display [HUD]	No	EASA / FAA – Not mandatory CAAC – R - 10% Fleet by 2015 & R - 100% by 2025
Area Navigation – BRNAV & PRNAV	PRNAV	BRNAV = +/- 5 NM RNAV5 & PRNAV = +/- 1 NM RNAV1
GPS Installk	Yes	
FM Immunity [COMM & NAV]	Yes	
VHF 8.33 kHz Chanel spacing	Yes	EASA – Mandatory above FL195 FAA – Not mandatory
ELT 121.5 / 406 MHz - Fixed	Yes	
ELT 121.5 / 243 / 406 MHz - Portable	Yes	

NOTE:

SPECIFIC

**INTERIOR CONFIGURATION**

Galleys	2	Trolley Qty	8
Lavatories	3	Cockpit Configuration	Standard [2+2]
Attendant Seats	5	In Flight Entertainment	No

<u>Attendant Seats</u>	<u>Part Number</u>
Attendant seats	2428-82ME03A0AE
	2428-82JE03A0AE
	2428-82HE03A0AE

<u>Galleys</u>	<u>Part Number</u>
Galley FWD	601852-038301
Galley AFT	601891-019601

<u>Lavatory</u>	<u>Part Number</u>
Lavatory FWD	D2549300314200
Lavatory AFT	G901001-489AA

<u>Seats</u>	<u>Quantity</u>	<u>Pitch</u>	<u>Manufacturer</u>
economy Cla	186	28"/35"	GEVEN ESSENZA

**AIRBUS**

REV	DESCRIPTION	DATE
1.0	ISSUED AFTER GEVEN REDESIGN	14 JUL 2021
1.1	STANDARD FLOOR CHANGES FROM 17.0 TO 17.0 B (STANDARD APPROX CHANGES FROM 17.0 TO 17.0 B)	10 SEP 2021
1.2	SPECIAL ORDER FOR BEST ROW 17 AND 11	
1.3	ROW 17 AND 11 TO 3 REWARD 7 BACKWARD	
1.4	REDESIGN FOR BEST ROW 17 AND 11	
1.5	REDESIGN FOR BEST ROW 17 AND 11	
1.6	REDESIGN FOR BEST ROW 17 AND 11	
1.7	REDESIGN FOR BEST ROW 17 AND 11	
1.8	REDESIGN FOR BEST ROW 17 AND 11	
1.9	REDESIGN FOR BEST ROW 17 AND 11	
1.10	REDESIGN FOR BEST ROW 17 AND 11	
1.11	REDESIGN FOR BEST ROW 17 AND 11	
1.12	REDESIGN FOR BEST ROW 17 AND 11	
1.13	REDESIGN FOR BEST ROW 17 AND 11	
1.14	REDESIGN FOR BEST ROW 17 AND 11	
1.15	REDESIGN FOR BEST ROW 17 AND 11	
1.16	REDESIGN FOR BEST ROW 17 AND 11	
1.17	REDESIGN FOR BEST ROW 17 AND 11	
1.18	REDESIGN FOR BEST ROW 17 AND 11	
1.19	REDESIGN FOR BEST ROW 17 AND 11	
1.20	REDESIGN FOR BEST ROW 17 AND 11	
1.21	REDESIGN FOR BEST ROW 17 AND 11	
1.22	REDESIGN FOR BEST ROW 17 AND 11	
1.23	REDESIGN FOR BEST ROW 17 AND 11	
1.24	REDESIGN FOR BEST ROW 17 AND 11	
1.25	REDESIGN FOR BEST ROW 17 AND 11	
1.26	REDESIGN FOR BEST ROW 17 AND 11	
1.27	REDESIGN FOR BEST ROW 17 AND 11	
1.28	REDESIGN FOR BEST ROW 17 AND 11	
1.29	REDESIGN FOR BEST ROW 17 AND 11	
1.30	REDESIGN FOR BEST ROW 17 AND 11	
1.31	REDESIGN FOR BEST ROW 17 AND 11	
1.32	REDESIGN FOR BEST ROW 17 AND 11	
1.33	REDESIGN FOR BEST ROW 17 AND 11	
1.34	REDESIGN FOR BEST ROW 17 AND 11	
1.35	REDESIGN FOR BEST ROW 17 AND 11	
1.36	REDESIGN FOR BEST ROW 17 AND 11	
1.37	REDESIGN FOR BEST ROW 17 AND 11	
1.38	REDESIGN FOR BEST ROW 17 AND 11	
1.39	REDESIGN FOR BEST ROW 17 AND 11	
1.40	REDESIGN FOR BEST ROW 17 AND 11	
1.41	REDESIGN FOR BEST ROW 17 AND 11	
1.42	REDESIGN FOR BEST ROW 17 AND 11	
1.43	REDESIGN FOR BEST ROW 17 AND 11	
1.44	REDESIGN FOR BEST ROW 17 AND 11	
1.45	REDESIGN FOR BEST ROW 17 AND 11	
1.46	REDESIGN FOR BEST ROW 17 AND 11	
1.47	REDESIGN FOR BEST ROW 17 AND 11	
1.48	REDESIGN FOR BEST ROW 17 AND 11	
1.49	REDESIGN FOR BEST ROW 17 AND 11	
1.50	REDESIGN FOR BEST ROW 17 AND 11	
1.51	REDESIGN FOR BEST ROW 17 AND 11	
1.52	REDESIGN FOR BEST ROW 17 AND 11	
1.53	REDESIGN FOR BEST ROW 17 AND 11	
1.54	REDESIGN FOR BEST ROW 17 AND 11	
1.55	REDESIGN FOR BEST ROW 17 AND 11	
1.56	REDESIGN FOR BEST ROW 17 AND 11	
1.57	REDESIGN FOR BEST ROW 17 AND 11	
1.58	REDESIGN FOR BEST ROW 17 AND 11	
1.59	REDESIGN FOR BEST ROW 17 AND 11	
1.60	REDESIGN FOR BEST ROW 17 AND 11	
1.61	REDESIGN FOR BEST ROW 17 AND 11	
1.62	REDESIGN FOR BEST ROW 17 AND 11	
1.63	REDESIGN FOR BEST ROW 17 AND 11	
1.64	REDESIGN FOR BEST ROW 17 AND 11	
1.65	REDESIGN FOR BEST ROW 17 AND 11	
1.66	REDESIGN FOR BEST ROW 17 AND 11	
1.67	REDESIGN FOR BEST ROW 17 AND 11	
1.68	REDESIGN FOR BEST ROW 17 AND 11	
1.69	REDESIGN FOR BEST ROW 17 AND 11	
1.70	REDESIGN FOR BEST ROW 17 AND 11	
1.71	REDESIGN FOR BEST ROW 17 AND 11	
1.72	REDESIGN FOR BEST ROW 17 AND 11	
1.73	REDESIGN FOR BEST ROW 17 AND 11	
1.74	REDESIGN FOR BEST ROW 17 AND 11	
1.75	REDESIGN FOR BEST ROW 17 AND 11	
1.76	REDESIGN FOR BEST ROW 17 AND 11	
1.77	REDESIGN FOR BEST ROW 17 AND 11	
1.78	REDESIGN FOR BEST ROW 17 AND 11	
1.79	REDESIGN FOR BEST ROW 17 AND 11	
1.80	REDESIGN FOR BEST ROW 17 AND 11	
1.81	REDESIGN FOR BEST ROW 17 AND 11	
1.82	REDESIGN FOR BEST ROW 17 AND 11	
1.83	REDESIGN FOR BEST ROW 17 AND 11	
1.84	REDESIGN FOR BEST ROW 17 AND 11	
1.85	REDESIGN FOR BEST ROW 17 AND 11	
1.86	REDESIGN FOR BEST ROW 17 AND 11	
1.87	REDESIGN FOR BEST ROW 17 AND 11	
1.88	REDESIGN FOR BEST ROW 17 AND 11	
1.89	REDESIGN FOR BEST ROW 17 AND 11	
1.90	REDESIGN FOR BEST ROW 17 AND 11	
1.91	REDESIGN FOR BEST ROW 17 AND 11	
1.92	REDESIGN FOR BEST ROW 17 AND 11	
1.93	REDESIGN FOR BEST ROW 17 AND 11	
1.94	REDESIGN FOR BEST ROW 17 AND 11	
1.95	REDESIGN FOR BEST ROW 17 AND 11	
1.96	REDESIGN FOR BEST ROW 17 AND 11	
1.97	REDESIGN FOR BEST ROW 17 AND 11	
1.98	REDESIGN FOR BEST ROW 17 AND 11	
1.99	REDESIGN FOR BEST ROW 17 AND 11	
2.00	REDESIGN FOR BEST ROW 17 AND 11	

**XL BINS INSTALLED**

DESCRIPTION	VC	TOTAL
PASSENGER SEATS	186	186
Galley	2	2
LAVATORY	3	3
COCKPIT	2	2
STOWAGE	1	1
ATTENDANT SEATS	5	5
CREW SEAT	1	1
CREW REST SEAT	1	1

**VC GEVEN ESSENZA**

MAX SEAT COUNT AVOIDS 100 BETWEEN OVER CENTERLINE OR REDUCES THE MAX CARGO LOAD CAPABILITY

SPECIFIC

G1 CL2



Miscellaneous Item	QTY	RFC	Comment
Mirror on sidewall panel, height 180 mm from AC level	1		
BFF - Full not table	1		
BFF - Cold hook, default location	1		

Comp	Additional Provisions	QTY	RFC	Comment
103, 104	CDB - Complete provisions for 2 x All meal items	1		
105	BFF - Complete provisions for 1 water heater (to power installed) / Storage table	1		
109, 110	BFF - Complete provisions for 4 hot Trolleys (single hotbed)	1		
110, 111	BFF - Complete provisions for 4 hot Trolleys (single hotbed), including broiler panel	1		

RFC's 87U25001AA and 86Z001BG raised for Galley cooling provisions in G1 and G4 for aircraft in the dependent fleets 87UAA (CDB) and 86ZBG (ACG)

Comp	Equipment	Qty	Manufact	PN	Alt. Manufact	Alt. PN	Crns. weight (kg)	Status	RFC	Comment
101 AB	Bed Unit	2	SAFRAN	241024			20	44	BFE	
102	Bed Unit	2	SAFRAN	241024			10	22	BFE	
103	Extended Connection Oven (Hot Meals)	1	SE AEROSPACE	401575-00-0000			49	107.8	BFE	EP1575 Series, Left Hand Door Opening
103.1	Hot tray additional Option	1	SE AEROSPACE	40200479			0	0	BFE	
103.2	Hot tray additional Option	1	SE AEROSPACE	208157			0	0	BFE	
104	Extended Connection Oven (Hot Meals)	1	SE AEROSPACE	401575-00-0000			49	107.8	BFE	EP1575 Series, Left Hand Door Opening
104.1	Hot tray additional Option	1	SE AEROSPACE	40200479			0	0	BFE	
104.2	Hot tray additional Option	1	SE AEROSPACE	208157			0	0	BFE	
105	Water Heater - High Power	1	SE AEROSPACE	408004-00-00-10			14.8	32.17	BFE	Upper Panel
106	Beverage Maker / Coffee maker + Dial	1	SE AEROSPACE	4013-100-00 / 419-001-05			14.8	32.17	BFE	
107	BFF - Cold hook with 3 hot probes (1 Energy storage)	1	SE AEROSPACE	353-0005-01			0	0	BFE	
108	BFF - Cold hook with 3 hot probes (1 Energy storage)	1	SE AEROSPACE	353-0005-01			7	16.4	BFE	Not hot industrial stainless steel
109	Storage compartment (bloodless compartment)	1					5	11	BFE	
109 AB	H/S Trolley	2	SAFRAN	24103001			80	198	BFE	
110 AB	H/S Trolley	1	SAFRAN	24103001			80	198	BFE	
111 AB	H/S Trolley	1	SAFRAN	24103001			80	198	BFE	
112 AB	H/S Trolley	2	SAFRAN	24103001			80	198	BFE	
113	CDB - Trolleys compartment with access from Trolley bay (basic hook access from storage table)	1					10	22	BFE	Not hot accessible during flight

Single bumper basic. If double bumpers installed, they are part of separate RFC.

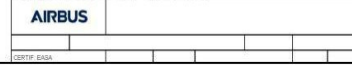
Equipment images not contractual

Basic - customizable    BFF - Full not table    CDB - Complete provisions    COUT - Out of Cabinet    Customized equipment

Out of cabinet    BFF - Full not table    CDB - Complete provisions    COUT - Out of Cabinet

REV	DESCRIPTION	DATE
A.0	- Change HELIX from BFE to BFF	22/04/2022
A.1		16/10/2021
A.2		13/11/2021
A.3		19/06/2021
A.4		09/03/2021

THE ILLUSTRATIONS, CONFIGURATIONS AND ANY REVISIONS TO IT WILL ONLY BE EFFECTIVE AFTER CONTRACTUAL AGREEMENT OF RESPECTIVE RFC(S) OWNER. THIS DRAWING IS THE PROPERTY OF AIRBUS - ALL RIGHTS RESERVED.



CSIRP: B204

G4b



Microfurniture Items	QTY	RFC	Comment
FFF - Pull out table	1		
FFF - Coat hook, alternative location	1		

Comp	Additional Provisions	QTY	RFC	Comment
415	COM - Complete provisions for 1 Escorted Over (All Meals) instead of 1 Escorted Over (All Meals) instead of a Connection Over (22 Meals)	1		
417	COM - Complete provisions for 1 Escorted Over (All Meals) instead of a Connection Over (22 Meals)	1		
418	COM - Complete provisions for 1 Escorted Over (All Meals) instead of a Connection Over (22 Meals)	1		

RFC's 87U25001AA and 86Z0018G related for Galley cooling provisions in G1 and G4b for aircraft in the dependent fleets 87UAA (CDB) and 86ZBG (ACG)

Comp	Equipment	Qty	Manufct.	P/N	Alt. Manufct.	Alt. P/N	Comp. weight kg / lb	Status	RFC	Comment
401 A&B	Std Unit	2	SAFRAN	DLH204			30 / 44	BFE		
402 A&B	Std Unit	2	SAFRAN	DLH204			20 / 44	BFE		
410	Washer/ Dryer/ High Power	1	SE AEROSPACE	808004-80-00-18			14.6 / 32.12	BFE		Jitter Frame
417	Extended Connection Over (All Meals)	1	SE AEROSPACE	4015750-00-0000			49 / 107.8	BFE		BP 1575 Series, Left Hand Door Opening
417.1	Over-tray additional Option	1	SE AEROSPACE	402004219			0 / 0	BFE		
417.2	Over-tray additional Option	1	SE AEROSPACE	526107			0 / 0	BFE		
418	Extended Connection Over (All Meals)	1	SE AEROSPACE	4015750-00-0000			49 / 107.8	BFE		BP 1575 Series, Left Hand Door Opening
418.1	Over-tray additional Option	1	SE AEROSPACE	402004219			0 / 0	BFE		
418.2	Over-tray additional Option	1	SE AEROSPACE	526107			0 / 0	BFE		
403 ABC	Std Unit	3	SAFRAN	DLH204			30 / 66	BFE		
410 ABC	Std Unit	3	SAFRAN	DLH204			30 / 66	BFE		
411	COM - Waste compartment, additional access from Trash Bin, 2nd Access Example	1					16 / 35.2	BFE		Waste bin accessible during flight
412	FSU Tray	1	SAFRAN	24101001			80 / 198	BFE		
413 A	HIS Tray	1	SAFRAN	24101001			45 / 99	BFE		
413 B	HIS Tray	1	SAFRAN	24101001			80 / 198	BFE		
414 A	HIS Tray	1	SAFRAN	24101001			45 / 99	BFE		
414 B	HIS Tray	1	SAFRAN	24101001			80 / 198	BFE		

Single item per table. If table items installed, they are part of separate RFC. Equipment images non contractual.

● Basic - customizable    ● Basic - not customizable    ● Customized equipment

Out of scope	FFF - Pull out table	COM - Complete	OUT - Out of Cluster	2204/022
A.0	- Change NELs from BFE to BFE			18/11/2021
A.5				18/11/2021
A.8				18/09/2021
A.1				18/09/2021
A.2				18/09/2021

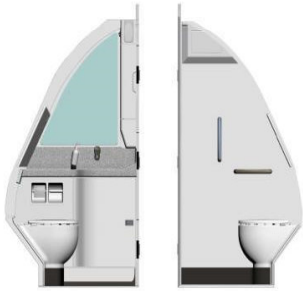
REV	DESCRIPTION	DATE
1	THE GALLEY STOWAGE CONFIGURATION AND ANY REVISION TO IT WILL ONLY BE EFFECTIVE AFTER CONTRACTUAL AGREEMENT OF RESPECTIVE RFC'S OWNERS. THIS DRAWING IS THE PROPERTY OF AIRBUS - ALL RIGHTS RESERVED.	

AIRBUS

CONFIDENTIAL

# SPECIFIC

## Lavatory A



Water faucet time adjustment 3 seconds - RFC SB138C001E  
 20m PU frame around dispensers RFC SB1250032E

Description		Installation of monument Lavatory A Single Lavatory
Option	Comment	
AC STD - Coat hook on lavatory door inside		
AC STD - Flow time adjustment - 15s		
AC STD - Nursing Table		
AC STD - Single Blade Door		
AC STD - Water faucet - manual, chrome finish		
EFFICIENT - Base unit		
EFFICIENT - Bottle (15 cc/0.5 g)		
EFFICIENT - Door handle alternate - lever type		
EFFICIENT - Plastic mirror		
EFFICIENT - Waste Ray Steel		
EFFICIENT - Work top/Wash-basin Vactor / Steel		
Metal material - polished steel		
PM - Axial handle		

Single bumper basic. If double bumpers installed, they are part of separate RFC  
 Equipment images non contractual

REV	DESCRIPTION	DATE
A.1		13/08/2020
THE LAVATORY CONFIGURATION AND ANY REVISION TO IT WILL ONLY BE EFFECTIVE AFTER CONTRACTUAL AGREEMENT OF RESPECTIVE RFC'S/IGS. THIS DRAWING IS THE PROPERTY OF AIRBUS - ALL RIGHTS RESERVED		
<b>AIRBUS</b>		
CERTIF: EASA		

Lavatory Fs SFv2



Description Installation of monument Lavatory Fs SFv2 Single Lavatory

Miscellaneous Item	Comment
AC STD - Coat hook on lavatory door inside	
AC STD - Flow time adjustment - 10s	
AC STD - Glass mirror on door	
AC STD - Hanging Table	
AC STD - Single Blade Door	
AC STD - Mirror top Sheet	
AC STD - Water faucet in smart fan and speaker - manual, chrome finish	
EFFICIENT - Soap unit	
EFFICIENT - Bottle (10 oz/283.5 g)	
EFFICIENT - Door handle alternate - lever type	
EFFICIENT - Handrail - brushed steel	
EFFICIENT - Plastic Mirror	
EFFICIENT - Work Top/Wash-basin Varior / Sheet	
PRM - Assi-handle	
PRM - Transfer seat (F)	

Single bumper basic. If double bumpers installed, they are part of separate RFC  
Equipment images not contractual

REV	DESCRIPTION	DATE
A1		13/08/2020
THE LAVATORY CONFIGURATION AND ANY REVISION TO IT WILL ONLY BE EFFECTIVE AFTER CONTRACTUAL AGREEMENT OF RESPECTIVE RFC USER'S. THIS DRAWING IS THE PROPERTY OF AIRBUS - ALL RIGHTS RESERVED.		
<b>AIRBUS</b>		
CERTIF. EASA		

# SPECIFICATION

## Lavatory Gs SFv2 combined with G4b



Description		Installation of monument Lavatory Gs SFv2 combined with G4b Single Lavatory
Lavatory		
Icon	Miscellaneous Items	Comment
	AC STD - Coat hook on lavatory door inside	
	AC STD - Floor line adjustment - 10x	
	AC STD - Wire Eye Steel	
	AC STD - Water faucet in smart-air and spaceRec - manual, chrome finish	
	Alternate - Single Slide Door with CR lock provisions	
	Door handle alternate - CAS type	
	EFFICIENT - Base unit	
	EFFICIENT - Bottle (10 oz/295 g)	
	EFFICIENT - Handrail - brushed metal	
	EFFICIENT - Plastic Mirror	
	EFFICIENT - Worktop/Work-been / Vector / Steel	

Single bumper basic. If double bumpers installed, they are part of separate RFC  
Equipment images non contractual

REV	DESCRIPTION	DATE
A1		3/30/2020
THE LAVATORY CONFIGURATION AND ANY REVISION TO IT WILL ONLY BE EFFECTIVE AFTER CONTRACTUAL AGREEMENT OF RESPECTIVE RFC SECTIONS. THIS DRAWING IS THE PROPERTY OF AIRBUS - ALL RIGHTS RESERVED.		
<b>AIRBUS</b>		
CERTIF. ENGR.		

Summary Table

Lavatory:	Lavatory A	Lavatory F6 SF-v2	Lavatory G6 SF-v2
<b>Options</b>			
AC STD - Flow time adjustment - 10s	x	x	x
AC STD - Glass mirror on door	N/A	x	N/A
AC STD - Nursing Table	x	x	N/A
AC STD - Waste flap Steel	N/A	x	x
AC STD - Water faucet - manual, chrome finish	x	N/A	N/A
AC STD - Water faucet in smart-lav and spaceflex - manual, chrome finish	N/A	x	x
EFFICIENT - Base Unit + Bottle	x	x	x
EFFICIENT - Handrail - brushed steel		x	x
EFFICIENT - Plastic mirror	x	N/A	N/A
EFFICIENT - Plastic Mirror	N/A	x	x
EFFICIENT - Waste flap Steel	x	N/A	N/A
EFFICIENT - Viorc-top/Wash-basin Varicor / Steel	x	x	x
PRM - Assist handle	N/A	x	N/A
PRM - Assist handle + Handrail material - polished steel	x	N/A	N/A
PRM - Transfer seat (F6)	N/A	x	N/A
Single blade door STD + door handle alternate lever type EFFICIENT + coat hook STD	x	x	
Single blade door with C/A seat provisions + door handle alternate - CAS type + coat hook STD	N/A	N/A	x



SPECIFICATION

**CARGO CONFIGURATION**

	Bulk	Designee (Fire Detection/Protection) class
Cargo Volume	37.42 3Metres	Main Cargo Door(s)

