

SPECIFICATION



Airbus A320-271N

Pos.# 4

Rev.: No. 2

Date: 08-APR-2024

Confidentiality and Disclaimer:

All rights reserved. This document is the sole property of the Seller. This document has been drafted and distributed for information purposes only. This document may not be reproduced or (re) distributed or otherwise utilized in part or whole without the express prior written permission of the Seller. While the information presented in this document is given in good faith based upon the most current information available to the Seller, changes or modifications with respect to the subject aircraft and the associated records and documentation may be made at any time. No express or implied warranty or representation is made and this document may not be regarded as establishing any obligation on the part of the Seller or any of its affiliates. It is expected that interested parties will conduct an independent physical inspection of the aircraft and associated records and documentation.

SPECIFICATION

AIRCRAFT IDENTIFICATION

Aircraft Model	A320-271N
Manufacture Year	2022
Engines Model	PW1127G-JM
APU Model	GTCP131-9A

	Metric	US Customary
Maximum Taxi Weight (MTW)	79'400 [Kg]	175'047 [Lbs]
Maximum Take Off Weight (MTOW)	79'000 [Kg]	174'165 [Lbs]
Maximum Landing Weight (MLW)	67'400 [Kg]	148'591 [Lbs]
Maximum Zero Fuel Weight (MZFV)	64'300 [Kg]	141'757 [Lbs]

WV050/055

AIRFRAME STATUS

(5000) Total Airframe Hours	1'710
Total Cycles	884
Status Date	05-MAR-2024

MAINTENANCE STATUS

C - Check interval	24 MO / 7'500 FH / 5'000 FC
6 Y - Check interval	72 MO
12 Y - Check interval	144 MO
Next C – Check	28-DEC-2024
Next 6 Y – Check	27-DEC-2028
Next 12 Y – Check	26-DEC-2034

SPECIFICATION

	LDG DETAILS	NLG	LH MLG	RH MLG
Part Number		10-375902-004	10-450301-007	10-450401-007
Hours Since New		1`714	1`714	1`714
Cycles Since New		844	844	844
Last Overhaul Date		NONE	NONE	NONE
Hours Since Last Overhaul		N/A	N/A	N/A
Cycles Since Last Overhaul		N/A	N/A	N/A
Remaining Cycles		19`116	19`116	19`116
Overhaul Due Date		Q4-2034	Q4-2034	Q4-2034
Overhaul Interval		20`000 FC or 12 Years	20`000 FC or 12 Years	20`000 FC or 12 Years
Status Date		05-MAR-2024	05-MAR-2024	05-MAR-2024

ENGINE / APU DETAILS	Engine 1	Engine 2	APU	
Manufacturer		Pratt & Whitney	Pratt & Whitney	Honeywell
Model		PW1127G-JM	PW1127G-JM	GTCP131-9A

ENGINE / APU STATUS	Engine 1	Engine 2	APU	
(5000) Total Time Since New	1`714	1`714	1`714	
Total Cycles Since New	884	884	884	
Last Shop Visit Date	NONE	NONE	NONE	
Scope of Last Shop Visit	N/A	N/A	N/A	
Hours Since Last Shop Visit	N/A	N/A	N/A	
Cycles Since Last Shop Visit	N/A	N/A	N/A	
First LLP Limiter	8`546	8`546	29`116	
Status Date	06-MAR-2024	06-MAR-2024	06-MAR-2024	

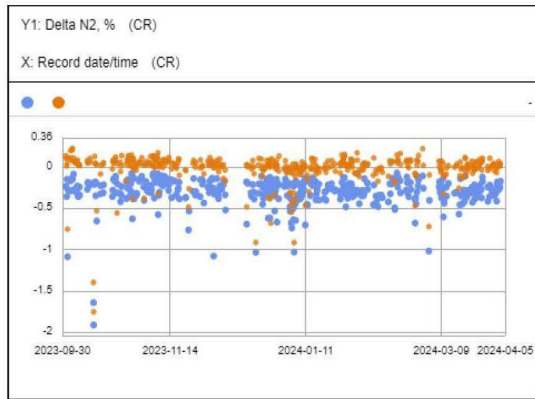
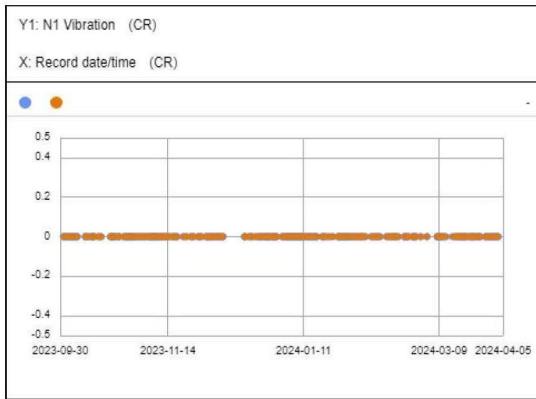
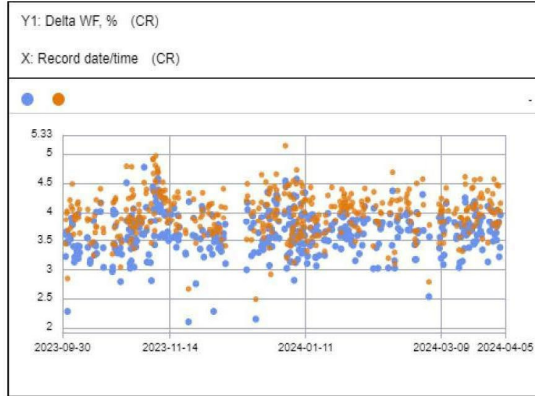
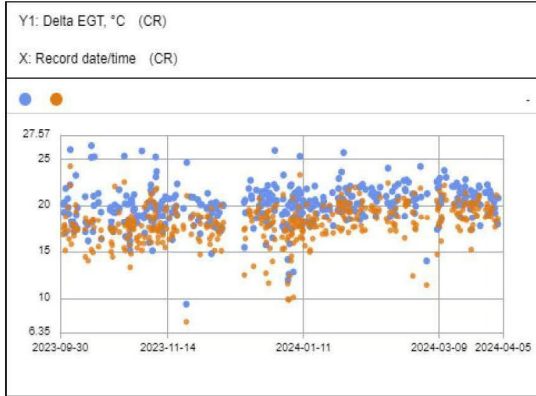
Engine Type:		TSN:	1`714	TSLSV:	N/A	Date:
PW1127G-JM		CSN:	884	CSLSV:	N/A	06-MAR-2024
NO.	PART NAME	PART NUMBER	TOTAL HOURS	TOTAL CYCLES	LIFE LIMIT CYCLES	REMAINING CYCLES
1)	HUB ASSY OF-FAN ROTOR,1STAGE	5370400-01	1`714	884	25`000	24`116
	SHAFT ASSY OF-FDGS	5370413-01	1`714	884	25`000	24`116
3)	COMPRESSOR ROTOR-AXIAL,1STAGE	5373841	1`714	884	25`000	24`116
4)	COMPRESSOR ROTOR-AXIAL,2STAGE	5373812	1`714	884	25`000	24`116
5)	HUB-LOW PRESSURE COMPRESSOR	5373810	1`714	884	25`000	24`116
6)	COMPRESSOR ROTOR-AXIAL,3STG	5373813	1`714	884	25`000	24`116
7)	HUB-HPC ROTOR, FRONT	30G9801	1`714	884	23`400	22`516
8)	COMPRESSOR ROTOR-A/O, STG1	32A4301	1`714	884	20`000	19`116
9)	COMPRESSOR ROTOR-HPC, STG2	32A4302	1`714	884	12`500	11`616
10)	COMPRESSOR ROTOR-HPC, STG3	32A4313	1`714	884	17`000	16`116
11)	COMPRESSOR ROTOR-HPC, STG4	32A4314	1`714	884	12`500	11`616
12)	HPC ROTOR-AXIAL, 5ST	30G6205	1`714	884	25`000	24`116
13)	HPC ROTOR-AXIAL, 6ST	30G6206	1`714	884	18`700	17`816
14)	HPC ROTOR-AXIAL, 7ST	30G4407	1`714	884	20`000	19`116
15)	HPC ROTOR-AXIAL, 8ST	30G8908	1`714	884	22`400	21`516
16)	SHAFT-HPC ROTOR	30G6140	1`714	884	20`600	19`716
17)	HUB-HPC ROTOR, REAR	30G8208	1`714	884	25`000	24`116
18)	TUBE-AIR, COOLING, HPC	30G2225	1`714	884	15`100	14`216
19)	CASE ASSY OF-DIFFUSER, OUTER	30G4916-01	1`714	884	14`200	13`316
20)	HUB-HPT, 1STAGE	30G7301	1`714	884	10`500	9`616
21)	SEAL-AIR, HPT ROTOR, 1ST	30G4617	1`714	884	12`500	11`616
22)	PLATE-RETAINING, BLADE, HPT	31G0018	1`714	884	12`500	11`616
23)	HUB-HPT,2STAGE	30G6602	1`714	884	12`300	11`416
24)	SEAL-AIR, HPT, 2STAGE	30G4811	1`714	884	9`430	8`546
25)	PLATE-HPT, 2STAGE	30G4606	1`714	884	12`500	11`616
26)	DISK-LP TURBINE, STG1	5387571	1`714	884	25`000	24`116
27)	DISK-LP TURBINE, STG2	5387572	1`714	884	25`000	24`116
28)	DISK-LP TURBINE, STG3	5387553	1`714	884	25`000	24`116
29)	SHAFT-LPT	5378509	1`714	884	25`000	24`116
LOWEST LIMITER						8`546

ENGINE Pos.#2 – LLP

Engine Type:		TSN:	1`714	TSLSV:	N/A	Date:
PW1127G-JM		CSN:	884	CSLSV:	N/A	06-MAR-2024
NO.	PART NAME	PART NUMBER	TOTAL HOURS	TOTAL CYCLES	LIFE LIMIT CYCLES	REMAINING CYCLES
1)	HUB ASSY OF-FAN ROTOR,1STAGE	5370400-01	1`714	884	25`000	24`116
	SHAFT ASSY OF-FDGS	5370413-01	1`714	884	25`000	24`116
3)	COMPRESSOR ROTOR-AXIAL,1STAGE	5373841	1`714	884	25`000	24`116
4)	COMPRESSOR ROTOR-AXIAL,2STAGE	5373812	1`714	884	25`000	24`116
5)	HUB-LOW PRESSURE COMPRESSOR	5373810	1`714	884	25`000	24`116
6)	COMPRESSOR ROTOR-AXIAL,3STG	5373813	1`714	884	25`000	24`116
7)	HUB-HPC ROTOR, FRONT	30G9801	1`714	884	23`400	22`516
8)	COMPRESSOR ROTOR-A/O, STG1	32A4301	1`714	884	20`000	19`116
9)	COMPRESSOR ROTOR-HPC, STG2	32A4302	1`714	884	12`500	11`616
10)	COMPRESSOR ROTOR-HPC, STG3	32A4313	1`714	884	17`000	16`116
11)	COMPRESSOR ROTOR-HPC, STG4	32A4314	1`714	884	12`500	11`616
12)	HPC ROTOR-AXIAL, 5ST	30G6205	1`714	884	25`000	24`116
13)	HPC ROTOR-AXIAL, 6ST	30G6206	1`714	884	18`700	17`816
14)	HPC ROTOR-AXIAL, 7ST	30G4407	1`714	884	20`000	19`116
15)	HPC ROTOR-AXIAL, 8ST	30G8908	1`714	884	22`400	21`516
16)	SHAFT-HPC ROTOR	30G6140	1`714	884	20`600	19`716
17)	HUB-HPC ROTOR, REAR	30G8208	1`714	884	25`000	24`116
18)	TUBE-AIR, COOLING, HPC	30G2225	1`714	884	15`100	14`216
19)	CASE ASSY OF-DIFFUSER, OUTER	30G4916-01	1`714	884	14`200	13`316
20)	HUB-HPT, 1STAGE	30G7301	1`714	884	10`500	9`616
21)	SEAL-AIR, HPT ROTOR, 1ST	30G4617	1`714	884	12`500	11`616
22)	PLATE-RETAINING, BLADE, HPT	31G0018	1`714	884	12`500	11`616
23)	HUB-HPT,2STAGE	30G6602	1`714	884	12`300	11`416
24)	SEAL-AIR, HPT, 2STAGE	30G4811	1`714	884	9`430	8`546
25)	PLATE-HPT, 2STAGE	30G4606	1`714	884	12`500	11`616
26)	DISK-LP TURBINE, STG1	5387571	1`714	884	25`000	24`116
27)	DISK-LP TURBINE, STG2	5387572	1`714	884	25`000	24`116
28)	DISK-LP TURBINE, STG3	5387553	1`714	884	25`000	24`116
29)	SHAFT-LPT	5378509	1`714	884	25`000	24`116
LOWEST LIMITER						8`546

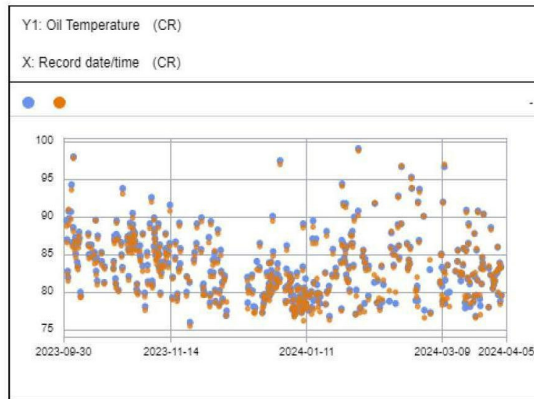
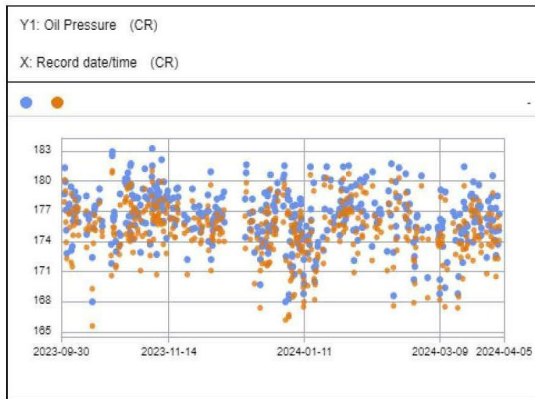
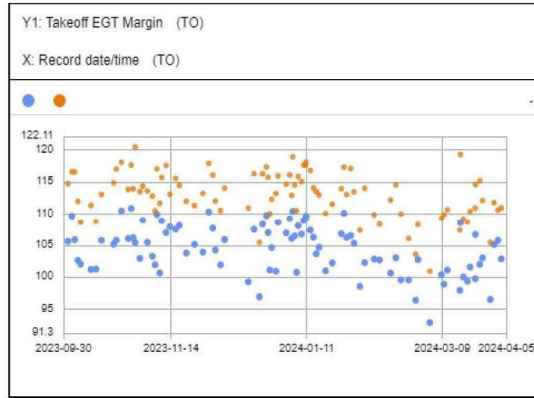
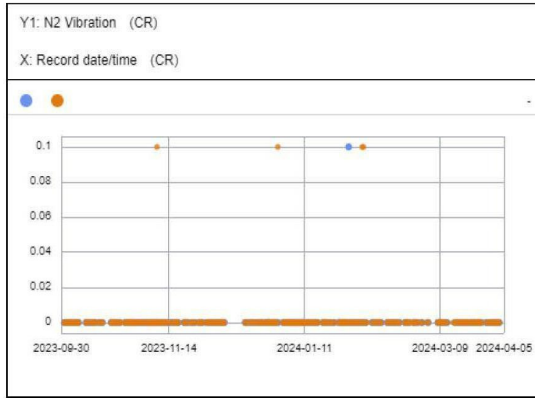
ENGINE#1 PW1127G-JM

ENGINE#2 PW1127G-JM



ENGINE#1 PW1127G-JM

ENGINE#2 PW1127G-JM



SPECIFICATION

CAPABILITIES AND MODIFICATION STATUS	COMPLIANCE	NOTES
Auto-flight Approach Category	CAT III	
ETOPS Capability	No	
Fuel Flow Fuel Qty Indication	Metric	
Sharklets/Winglets	Yes	Sharklets
	No	
Fuel Tank Inerting System Nitrogen Gas System	Yes	EASA – P by 01-JAN-2012; R – Not required FAA – P by 28-DEC-2010 / R 100% Fleet by 26-DEC-2017
Reinforced Cockpit Door	Yes	
Cockpit 4th occupant seat	Yes	
Cargo Loading System	No	
Cockpit Door Surveillance System	Yes	
GPWS –Ground Proximity Warning System	Yes	
RVSM – Reduced Vertical Separation Minima	Yes	
Traffic Collision Avoidance System [TCAS] Software version 7.1	Yes Yes	EASA – P on 12-MAR-2014 / R on 01-DEC-2015 FAA – Not required
Enhanced Surveillance [EHS] Mode S, ATC Transponder	Yes	
Elementary Surveillance [ELS], ATC Transponder	Yes	
ATC Mode S Transponder ADS-B Out DO 260Bcapability	Yes	EASA – P on 08-JUN-2016 & R on 07-JUN-2020 FAA – P & R on 01-JAN-2020
SELCAL – Selective-Calling Radio System	Yes	
ISIS – Integrated Standby Instrument System	Yes	
ISIS – Altitude indication in Meters	Yes	
Head-Up Display [HUD]	No	EASA / FAA – Not mandatory CAAC – R - 10% Fleet by 2015 & R - 100% by 2025
Area Navigation – BRNAV & PRNAV	PRNAV	BRNAV = +/- 5 NM RNAV5 & PRNAV = +/- 1 NM RNAV1
GPS Installed	Yes	
FM Immunity [COMM & NAV]	Yes	
VHF 8.33 kHz Chanel spacing	Yes	EASA – Mandatory above FL195 FAA – Not mandatory
ELT 121.5 / 406 MHz - Fixed	Yes	
ELT 121.5 / 243 / 406 MHz - Portable	Yes	

NOTE:

A320-271N

Page 7 of 12

SPECIFICATION

G1 CL2



Miscellaneous Items	QTY	RFC	Comment
Mirror on sidewall panel, height 1850 mm, 1800 mm, 1800 mm, 1800 mm	1		
EFF - Pull out table	1		
EFF - Cool Truck - default location	1		

Comp	Additional Provisions	QTY	RFC	Comment
103, 104	COM - Complete provisions for 2 x 40 meal seats	1		
105	EFF - Complete provisions for 1 water heater for power installed in Beverage maker	1		
109, 110	EFF - Complete provisions for 4 HG Trays (Galley installed)	1		
110, 111	EFF - Complete provisions for 4 HG Trays (Galley installed, including floor area)	1		

RFC's 87U25001AA and 86ZD01BG raised for Galley cooling provisions in G1 and G46 for aircraft in the dependent fleets 87U-AA (CDB) and 86Z-BG (ACG)

Comp	Equipment	Qty	Manufact.	PN	Alt. Manufact.	Alt. PN	Comp. weight kg	Status	RFC	Comment
101 AB	2nd line	2	SAFRAN	244204			20	64	BFE	
102	3rd line	1	SAFRAN	244204			10	22	BFE	
103	Extended Connective Over (40 Meals)	1	BE AEROSPACE	401370-00-000			49	107.0	BFE	EXP 1575 Series, Left Hand Door Opening
103.1	Open rack additional Option	1	BE AEROSPACE	40294219			0	0	BFE	
103.2	Open tray additional Option	3	BE AEROSPACE	208152			0	0	BFE	
104	Extended Connective Over (40 Meals)	1	BE AEROSPACE	401370-00-000			49	107.0	BFE	EXP 1575 Series, Left Hand Door Opening
104.1	Open rack additional Option	1	BE AEROSPACE	40294219			0	0	BFE	
104.2	Open tray additional Option	3	BE AEROSPACE	208152			0	0	BFE	
105	Water Heater - High Power	1	BE AEROSPACE	403004-00-00-10			14.6	32.13	BFE	Upper Panel
106	Beverage maker / Coffee maker - Flat	1	BE AEROSPACE	401430-00-01-10-000-10			14.6	32.13	BFE	
109	Bevng. jst/Coffee server additional Option	1	BE AEROSPACE	3534-0005-01			0	0	BFE	
107	EFF - Ice drawer with 300L instead of storage compartment	1					7	15.4	BFE	No bin material stainless steel
108	Storage compartment (if continuous compartment)	1					5	11	BFE	
109 AB	HG Trays	2	SAFRAN	24101001			90	190	BFE	
110 AB	HG Trays	1	SAFRAN	24101001			90	190	BFE	
111 AB	HG Trays	1	SAFRAN	24101001			90	190	BFE	
112 AB	HG Trays	2	SAFRAN	24101001			90	190	BFE	
113	COM - Waste compartment with access from Trays by top. Not accessible for manual disposal.	1					10	22	BFE	Flaps on accessible during flight

Single bumper basic. If double bumpers installed, they are part of separate RFC Equipment Manager file contract.

Basic - customizable Basic - not customizable Customized equipment

Out of catalogue EFF - Efficient COM - Comfort OUT - Out of Cluster

REV	DESCRIPTION	DATE
A.0	- Change NBU to BFE	22/06/2022
A.1		16/11/2021
A.2		17/11/2021
A.3		10/06/2021
A.3		09/06/2021

THIS DRAWING IS THE PROPERTY OF AIRBUS - ALL RIGHTS RESERVED

AIRBUS	
CERTIF. 8484	

G4b



Miscellaneous Items		QTY	RFC	Comment
	FFF - Full out table	1		
	FFF - Coal floor, alternative location	1		

Comp	Additional Provisions	QTY	RFC	Comment
433	FFF - Complete provisions for 1 water heater (100 liter) instead of 2 (50 liter) water heaters	1		
437	CAF - Complete provisions for 1 (E) cabin (100 liter) instead of 2 (50 liter) water heaters	1		
438	CAF - Complete provisions for 1 (E) cabin (100 liter) instead of 2 (50 liter) water heaters	1		

RFC's 87U25001AA and 86Z001BG raised for Galley cooling provisions in G1 and G4b for aircraft in the dependent fleets 87U-AA (CDB) and 86Z-BG (ACG)

Comp	Equipment	Qty	Manufact.	PN	Alt. Manufact.	Alt. PN	Comp. weight KG	Status	RFC	Comment
407 A/B	B31 Unit	2	SAFRAN	ZLX024			20	46	BFE	
402 A/B	B31 Unit	2	SAFRAN	ZLX024			20	46	BFE	
405	Water Heater, High Power	1	BE AEROSPACE	A28004-03-01-10			14.45	32.12	BFE	100% Fixed
437	Equip'd Connexion Over (M1/Meat)	1	BE AEROSPACE	A11950-00-0000			40	157.9	BFE	EXP-155 Series, Left Hand Door Opening
437.1	Open rack additional Option	1	BE AEROSPACE	A13304219			0	0	BFE	
437.2	Open tray additional Option	8	BE AEROSPACE	238102			0	0	BFE	
438	Equip'd Connexion Over (M1/Meat)	1	BE AEROSPACE	A11950-00-0000			40	157.9	BFE	EXP-155 Series, Left Hand Door Opening
438.1	Open rack additional Option	1	BE AEROSPACE	A13304219			0	0	BFE	
438.2	Open tray additional Option	8	BE AEROSPACE	238102			0	0	BFE	
439 A/B/C	B31 Unit	3	SAFRAN	ZLX024			30	66	BFE	
310 A/B/C	B31 Unit	3	SAFRAN	ZLX024			30	66	BFE	
441	CDU - Ready compartment, additional access from Forward Entry, Front Access Rampers	1					16	35.2	BFE	Access on accessible during flight
442	P31 Tray	1	SAFRAN	2110101			90	190	BFE	
412.A	P31 Tray	1	SAFRAN	2110101			45	95	BFE	
413.B	P31 Tray	1	SAFRAN	2110101			90	190	BFE	
416.A	P31 Tray	1	SAFRAN	2110101			45	95	BFE	
416.B	P31 Tray	1	SAFRAN	2110101			90	190	BFE	

Single bumper basic. If double bumpers installed, they are part of separate RFC

Equipment images non contractual

Basic - submittable
 Basic - not customizable
 Customized equipment

Out of Outboard
 FFF - Full out
 CAF - Cabin
 COM - Comfort
 OUT - Out of Outboard

REV	DESCRIPTION	DATE
A.0	Change HLU's from SPE to BFE	12/04/2012
A.1		18/11/2012
A.4		13/11/2012
A.3		16/06/2011
A.2		06/06/2011

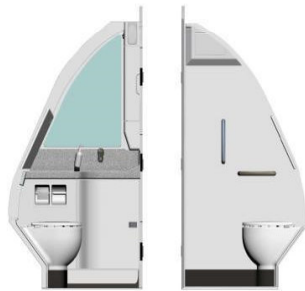
THE SINGLE SOURCE CONFIGURATION AND ANY REVISION TO IT WILL ONLY BE EFFECTIVE AFTER CONTRACTUAL AGREEMENT OF RESPECTIVE RFC'S/CAEs. THIS DRAWING IS THE PROPERTY OF AIRBUS - ALL RIGHTS RESERVED.

AIRBUS

CDTDF: 833A

SPECIFICATION

Lavatory A



Water faucet time adjustment 3 seconds - RFC SBI38D001E
 2cm PU frame around dispensers RFC SBI25D002E

Description: Installation of monument Lavatory A Single Lavatory

Option	Comment
AC STD - Coat hook on lavatory door inside	
AC STD - Floor time adjustment - 10s	
AC STD - Nursing Table	
AC STD - Single Blade Door	
AC STD - Water faucet - manual, chrome finish	
EFFICIENT - Base unit	
EFFICIENT - Bottle (10 ec/300 5-g)	
EFFICIENT - Door handle alternate - lever type	
EFFICIENT - Plastic mirror	
EFFICIENT - Waste flap Door	
EFFICIENT - Wash-top/Wash-basin Vector / 2044	
Handrail material - polished steel	
PRM - Assist handle	

Single bumper basic. If double bumpers installed, they are part of separate RFC
 Equipment images non contractual

REV	DESCRIPTION	DATE
A-1		3/06/2020
THE LAVATORY CONFIGURATION AND ANY REVISION TO IT WILL ONLY BE EFFECTIVE AFTER CONTRACTUAL AGREEMENT OF RESPECTIVE ENGINEERS. THIS DRAWING IS THE PROPERTY OF AIRBUS - ALL RIGHTS RESERVED.		
CERTIF: BAA		

Lavatory Fs SFv2



Description: Installation of monument Lavatory Fs SFv2 Single Lavatory.

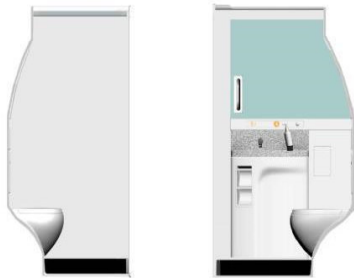
Miscellaneous Items	Comment
AC STD - Coat hook on lavatory door inside	
AC STD - Flow time adjustment - 10s	
AC STD - Glass mirror on door	
AC STD - Nursing Table	
AC STD - Single Blade Door	
AC STD - Waste Egg Tray	
AC STD - Water faucet in smart-lav and spooles - manual chrome finish	
EFFICIENT - Base unit	
EFFICIENT - Bottle (10 ea/205 g)	
EFFICIENT - Door handle alternate - new type	
EFFICIENT - Handrail - brushed steel	
EFFICIENT - Plastic Mirror	
EFFICIENT - Pook top/Wash basin / Vector / Seat	
PRM - Acid handle	
PRM - Transfer seat (Fa)	

Single bumper basic. If double bumpers installed, they are part of separate RFC
Equipment images non contractual

REV	DESCRIPTION	DATE
A1		
<p>THE LAVATORY CONFIGURATION AND ANY REVISION TO IT WILL ONLY BE EFFECTIVE AFTER CONTRACTUAL AGREEMENT OF RESPECTIVE REP'S/OIG'S. THIS DRAWING IS THE PROPERTY OF AIRBUS - ALL RIGHTS RESERVED.</p> <p>AIRBUS</p>		
CERTIF: EASA		

SPECIFICATION

Lavatory Gs SFv2 combined with G4b



Description Installation of monument Lavatory Gs SFv2 combined with G4b Single Lavatory

Miscellaneous Items	Comment
AC STD - Coat hook on lavatory door inside	
AC STD - Floor line equipment - 10s	
AC STD - Waste Tray Chisel	
AC STD - Filter fount or smart-ke and speaker - manual, chrome finish	
Alternate - Single Sluice Door with CAR seat equipment	
Door handle alternate - CAD type	
EFFICIENT - Base unit	
EFFICIENT - Bottle (10 x 200.5 g)	
EFFICIENT - Handrail - brushed steel	
EFFICIENT - Plastic Mirror	
EFFICIENT - Yook-top/Wash-basin / Vector / Seat	

Single bumper basic. If double bumpers installed, they are part of separate RFC
Equipment images non contractual

REV	DESCRIPTION	DATE
A-1		3/20/2020
THE LAVATORY CONFIGURATION AND ANY REVISION TO IT WILL ONLY BE EFFECTIVE AFTER CONTRACTUAL AGREEMENT OF RESPECTIVE REVISIONS THIS DRAWING IS THE PROPERTY OF AIRBUS - ALL RIGHTS RESERVED		
AIRBUS		
CERTIF: EASA		

Summary Table

Lavatory:	Lavatory A	Lavatory F6 SFV2	Lavatory G6 SFV2
Options:			
AC STD - Flow time adjustment - 10s	x	x	x
AC STD - Glass mirror on door	N/A	x	N/A
AC STD - Nursing Table	x	x	N/A
AC STD - Waste flap Steel	N/A	x	x
AC STD - Water faucet - manual, chrome finish	x	N/A	N/A
AC STD - Water faucet in smart-lav and spaceflex - manual, chrome finish	N/A	x	x
EFFICIENT - Base Unit + Bottle	x	x	x
EFFICIENT - Handrail - brushed steel		x	x
EFFICIENT - Plastic mirror	x	N/A	N/A
EFFICIENT - Plastic Mirror	N/A	x	x
EFFICIENT - Waste flap Steel	x	N/A	N/A
EFFICIENT - Work-top/Wash-basin Varicor / Steel	x	x	x
PRM - Assist handle	N/A	x	N/A
PRM - Assist handle + Handrail material - polished steel	x	N/A	N/A
PRM - Transfer seat (Fs)	N/A	x	N/A
Single blade door STD + door handle alternate lever type EFFICIENT + coat hook STD	x	x	
Single blade door with C/A seat provisions + door handle alternate - CAS type + coat hook STD	N/A	N/A	x

SPECIFICATION

CARGO CONFIGURATION			
Cargo Configuration	Bulk	Designee (Fire Detection/Protection) class	"C"
Cargo Volume	37.42 3Metres	Main Cargo Door(s)	71" x 48"

